

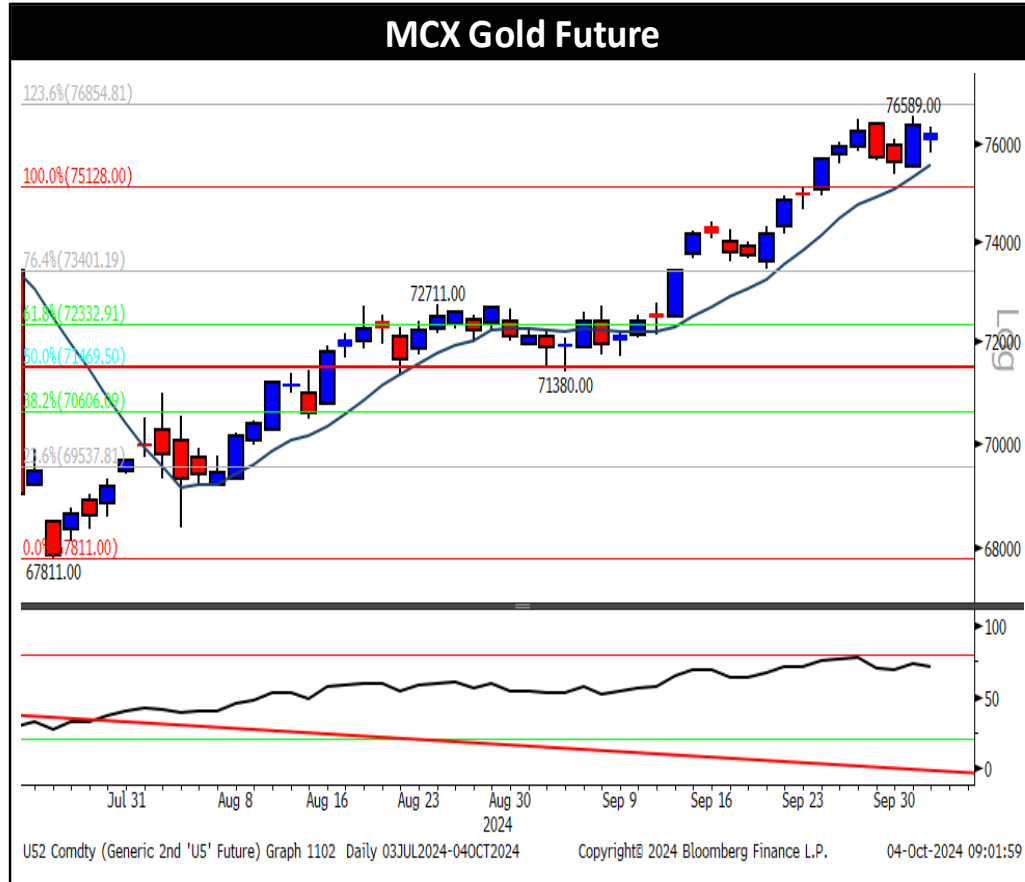


Commodity Daily | 04 October 2024

Name	Current Price	Previous Close	Change	% Change
Commodities				
COMEX Gold	2655.89	2658.69	-2.8	-0.11%
COMEX Silver	32.017	31.8315	0.1855	0.58%
WTI Crude Oil	73.71	70.1	3.61	5.15%
Natural Gas	2.97	2.886	0.084	2.91%
LME Copper	9866	10085	-218.5	-2.17%
LME Zinc	3124	3174	-49.5	-1.56%
LME Lead	2142.5	2151	-8.5	-0.40%
LME Aluminium	2629	2679	-49.5	-1.85%
Currencies				
Dollar Index	101.989	101.677	0.312	0.31%
USDINR	83.9675	NA	NA	NA
EURUSD	1.1031	1.1045	-0.0014	-0.13%
Global Equity Indices				
BSE Sensex	82497	NA	NA	NA
Hang Seng Index	22114	22444	-330	-1.47%
Nikkei	38552	37809	743	1.97%
Shanghai	NA	NA	NA	NA
S&P 500 Index	5700	5710	-10	-0.17%
Dow Jones	42012	42197	-185	-0.44%
Nasdaq	19793	19803	-9	-0.05%
FTSE 500	8283	8291	-8	-0.10%
CAC Index	7478	7578	-100	-1.32%
DAX Index	19015	19165	-149	-0.78%

GLOBAL MARKET ROUND UP

- ⇒ Gold closed with a modest decline on Thursday, pressured by a recovery in the dollar index following better-than-expected US service PMI data, which has dimmed expectations for another half-point rate cut at the next Federal Reserve meeting.
- ⇒ US service PMI expanded in September at the fastest pace since February 2023, driven by a flurry of orders and stronger business activity.
- ⇒ Crude oil posted its biggest one-day jump in almost a year as markets braced for the possibility that Israel could strike Iran's energy industry, the latest potential escalation of a conflict that began almost a year ago when Hamas attacked Israel. Meanwhile, Libya resumed oil production on Thursday, returning hundreds of thousands of barrels a day to global markets after resolving a political standoff in the OPEC nation.
- ⇒ Natural gas futures surged on Thursday, supported by an update on the storage report that showed a lower-than-average addition to stockpiles.
- ⇒ Copper and other base metals gave up earlier gains and closed with losses as traders took profit after a recent rally and recovery in the US dollar, which also weighed down on base metals.
- ⇒ Hong Kong stocks led gains among Asian equities ahead of US jobs data that'll offer clues on the health of the US economy, which can provide investors with an evaluation of the possibility of additional monetary easing by the Federal Reserve.



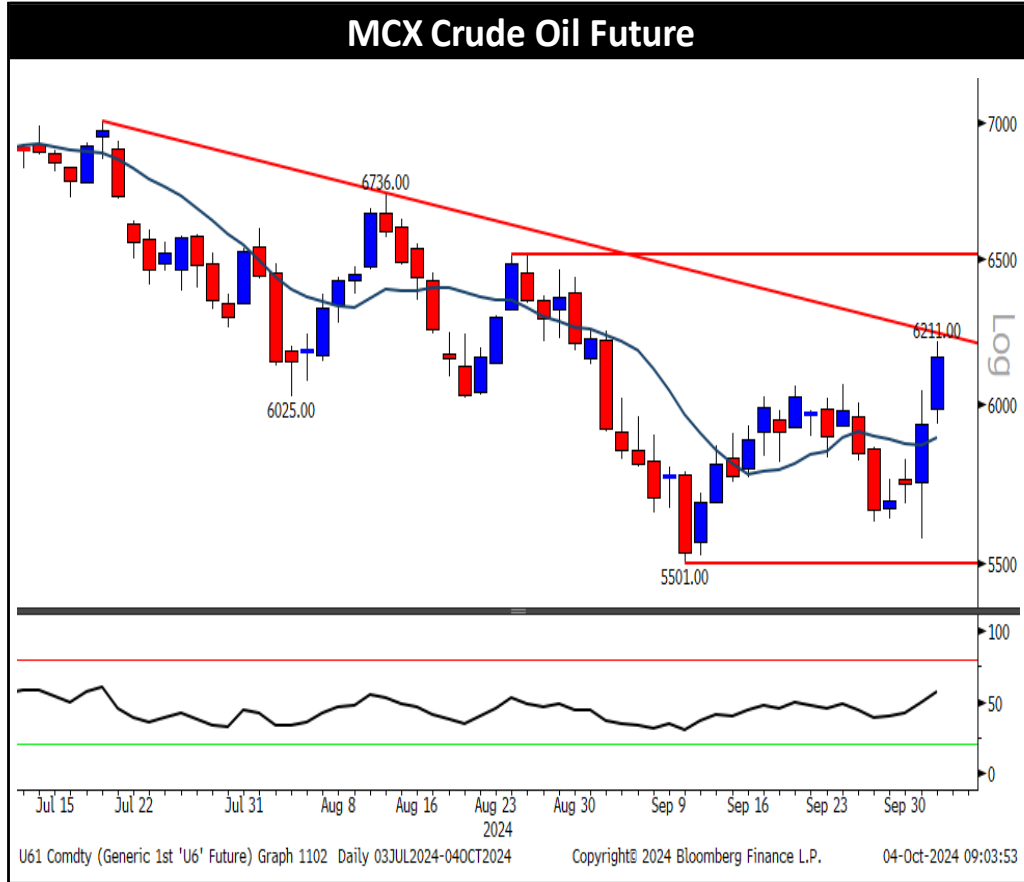
⇒ **Trading Range: 75980 to 76700**

⇒ **Intraday Trading Strategy: Buy Gold Dec. at 76180
SL 75900 Target 76450/76600**



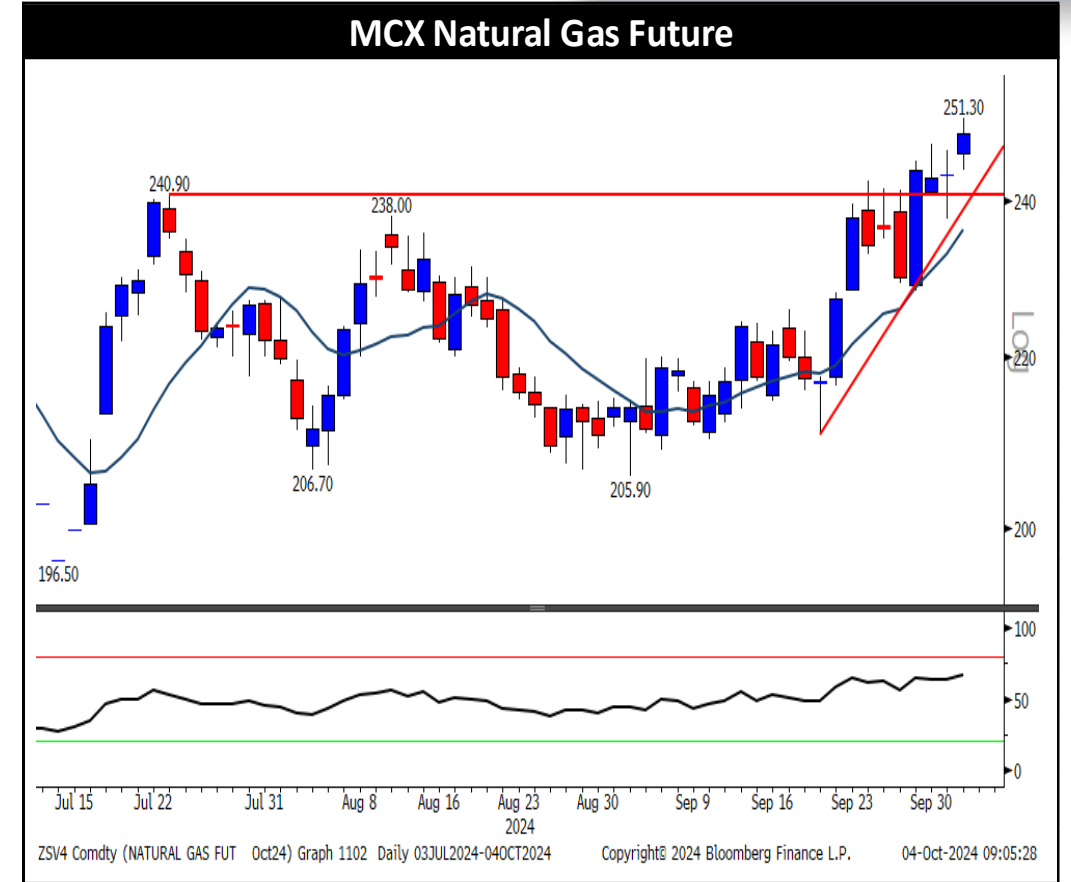
⇒ **Trading Range: 91900 to 94300**

⇒ **Intraday Trading Strategy: Buy Silver Mini Nov Fut
92450-92500 SL 92050 Target 93680**



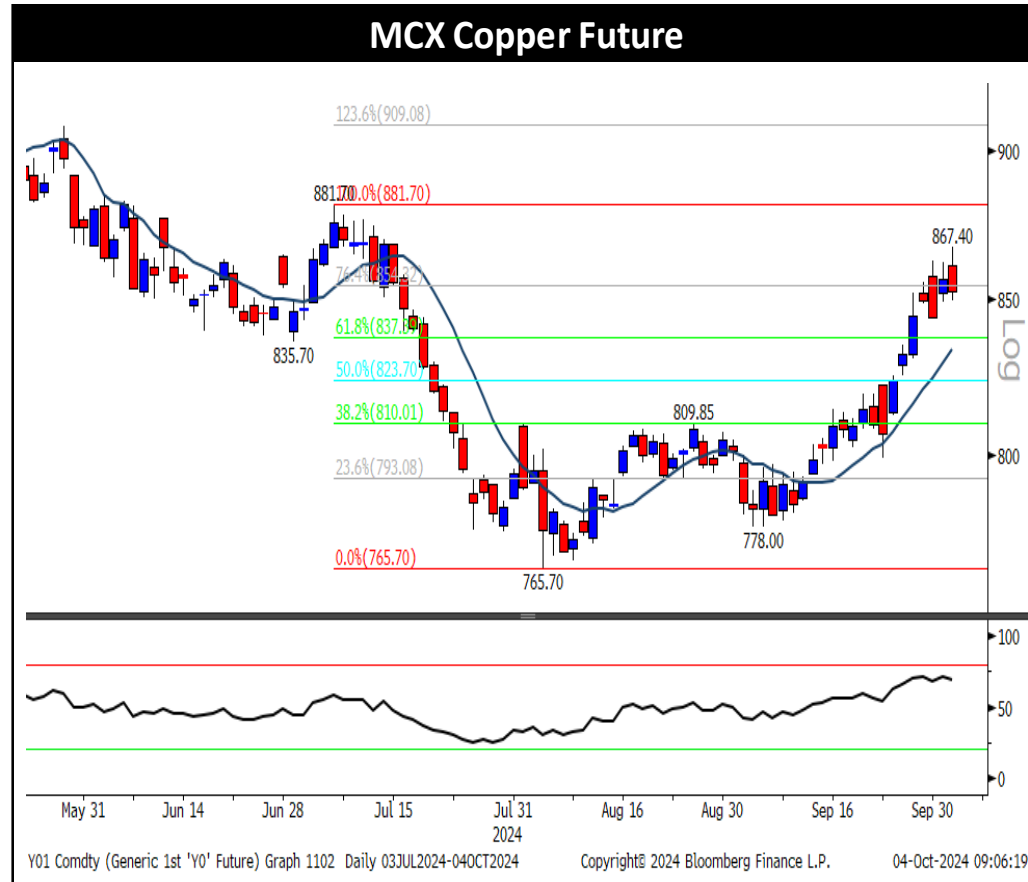
⇒ **Trading Range: 6080 to 6325**

⇒ **Intraday Trading Strategy: Buy Crude Oil Oct Fut at 6135 SL 6095 Target 6235**



⇒ **Trading Range: 242 to 256**

⇒ **Intraday Trading Strategy: Buy Natural Gas Oct Fut at 245 SL 242.0 Target 253**



⇒ **Trading Range: 836 to 859**

⇒ **Intraday Trading Strategy: Buy Copper Oct Fut at 850 SL 844.80 Target 857/859**



⇒ **Trading Range: 280-288**

⇒ **Intraday Trading Strategy: Buy Zinc Oct Fut at 283 SL 280 Target 287**

Technical Levels

Commdity	Pivot	Supt.3	Supt.2	Supt.1	Resi.1	Resi.2	Resi.3	5 DMA	20 DMA	RSI
Gold	76149	75075	75612	75928	76465	76686	77223	76044	74309	71.0
Silver	92548	88998	90773	91875	93650	94323	96098	91811	88782	63.8
Crude Oil	6103	5553	5828	5994	6269	6378	6653	5840	5814	58.3
Natural Gas	248	234	241	245	252	255	262	242	227	67.2
Copper	856	820	838	845	864	875	893	856	825	63.9
Zinc	285	272	278	281	288	292	299	282	269	68.3
Lead	186	180	183	184	187	189	192	185	183	56.8
Aluminium	241	228	234	237	244	248	255	239	231	65.6

Commodity Movement

Commdity	Expiry	Open	High	Low	Close	% Chg.	Open Interest	Chg. In OI	Volume	Chg. In Volume
Gold	05-Dec-24	76114	76370	75833	76244	-0.19%	16655	-3%	6175	-12%
Silver	05-Dec-24	91844	93220	91445	92978	1.75%	24880	-2%	19159	-7%
Crude Oil	21-Oct-24	5986	6211	5936	6161	3.81%	14659	-5%	52716	-42%
Natural Gas	28-Oct-24	246	251	244	249	2.34%	20624	12%	131074	-25%
Copper	31-Oct-24	861	867	849	853	-0.47%	8376	-1%	11367	18%
Zinc	31-Oct-24	285	290	283	284	-0.18%	3328	-10%	4912	37%
Lead	31-Oct-24	187	187	184	186	0.84%	403	2%	1408	71%
Aluminium	31-Oct-24	244	245	238	241	0.42%	3193	-7%	2369	20%

Disclosure:

I, Saumil Gandhi, Commerce graduate authors and the names subscribed to this report, hereby certify that all of the views expressed in this research report accurately reflect our views about the subject issuer(s) or securities. SEBI conducted the inspection and based on their observations have issued advise/warning. The said observations have been complied with. We also certify that no part of our compensation was, is, or will be directly or indirectly related to the specific recommendation(s) or view(s) in this report.

Research Analyst or his/her relative or HDFC Securities Ltd. does not have any financial interest in the subject company. Also Research Analyst or his relative or HDFC Securities Ltd. or its Associate may have beneficial ownership of 1% or more in the subject company at the end of the month immediately preceding the date of publication of the Research Report. Further Research Analyst or his relative or HDFC Securities Ltd. or its associate does have/does not have any material conflict of interest.

Any holding in stock – No

HDFC Securities Limited (HSL) is a SEBI Registered Research Analyst having registration no. INH000002475.

Disclaimer:

This report has been prepared by HDFC Securities Ltd and is solely for information of the recipient only. The report must not be used as a singular basis of any investment decision. The views herein are of a general nature and do not consider the risk appetite or the particular circumstances of an individual investor; readers are requested to take professional advice before investing. Nothing in this document should be construed as investment advice. Each recipient of this document should make such investigations as they deem necessary to arrive at an independent evaluation of an investment in securities of the companies referred to in this document (including merits and risks) and should consult their own advisors to determine merits and risks of such investment. The information and opinions contained herein have been compiled or arrived at, based upon information obtained in good faith from sources believed to be reliable. Such information has not been independently verified and no guaranty, representation of warranty, express or implied, is made as to its accuracy, completeness or correctness. All such information and opinions are subject to change without notice. Descriptions of any company or companies or their securities mentioned herein are not intended to be complete. HSL is not obliged to update this report for such changes. HSL has the right to make changes and modifications at any time.

This report is not directed to, or intended for display, downloading, printing, reproducing or for distribution to or use by, any person or entity who is a citizen or resident or located in any locality, state, country or other jurisdiction where such distribution, publication, reproduction, availability or use would be contrary to law or regulation or what would subject HSL or its affiliates to any registration or licensing requirement within such jurisdiction.

If this report is inadvertently sent or has reached any person in such country, especially, United States of America, the same should be ignored and brought to the attention of the sender. This document may not be reproduced, distributed or published in whole or in part, directly or indirectly, for any purposes or in any manner.

Foreign currencies denominated securities, wherever mentioned, are subject to exchange rate fluctuations, which could have an adverse effect on their value or price, or the income derived from them. In addition, investors in securities such as ADRs, the values of which are influenced by foreign currencies effectively assume currency risk. It should not be considered to be taken as an offer to sell or a solicitation to buy any security.

This document is not, and should not, be construed as an offer or solicitation of an offer, to buy or sell any securities or other financial instruments. This report should not be construed as an invitation or solicitation to do business with HSL. HSL may from time to time solicit from, or perform broking, or other services for, any company mentioned in this mail and/or its attachments.

HSL and its affiliated company(ies), their directors and employees may; (a) from time to time, have a long or short position in, and buy or sell the securities of the company(ies) mentioned herein or (b) be engaged in any other transaction involving such securities and earn brokerage or other compensation or act as a market maker in the financial instruments of the company(ies) discussed herein or act as an advisor or lender/borrower to such company(ies) or may have any other potential conflict of interests with respect to any recommendation and other related information and opinions.

HSL, its directors, analysts or employees do not take any responsibility, financial or otherwise, of the losses or the damages sustained due to the investments made or any action taken on basis of this report, including but not restricted to, fluctuation in the prices of shares and bonds, changes in the currency rates, diminution in the NAVs, reduction in the dividend or income, etc.

HSL and other group companies, its directors, associates, employees may have various positions in any of the stocks, securities and financial instruments dealt in the report, or may make sell or purchase or other deals in these securities from time to time or may deal in other securities of the companies / organizations described in this report. As regards the associates of HSL please refer the website.

HSL or its associates might have managed or co-managed public offering of securities for the subject company or might have been mandated by the subject company for any other assignment in the past twelve months. HSL or its associates might have received any compensation from the companies mentioned in the report during the period preceding twelve months from the date of this report for services in respect of managing or co-managing public offerings, corporate finance, investment banking or merchant banking, brokerage services or other advisory service in a merger or specific transaction in the normal course of business.

HSL or its analysts did not receive any compensation or other benefits from the companies mentioned in the report or third party in connection with preparation of the research report. Accordingly, neither HSL nor Research Analysts have any material conflict of interest at the time of publication of this report. Compensation of our Research Analysts is not based on any specific merchant banking, investment banking or brokerage service transactions. HSL may have issued other reports that are inconsistent with and reach different conclusion from the information presented in this report.

Research entity has not been engaged in market making activity for the subject company. Research analyst has not served as an officer, director or employee of the subject company. We have not received any compensation/benefits from the subject company or third party in connection with the Research Report.

Please note that HDFC Securities has a proprietary trading desk. This desk maintains an arm's length distance with the Research team and all its activities are segregated from Research activities. The proprietary desk operates independently, potentially leading to investment decisions that may deviate from research views.

HDFC securities Limited, I Think Techno Campus, Building - B, "Alpha", Office Floor 8, Near Kanjurmarg Station, Opp. Crompton Greaves, Kanjurmarg (East), Mumbai 400 042 Phone: (022) 3075 3400 Fax: (022) 2496 5066

Compliance Officer: Murli V Karkera Email: complianceofficer@hdfcsec.com Phone: (022) 3045 3600

For grievance redressal contact Customer Care Team Email: customercare@hdfcsec.com Phone: (022) 3901 9400

HDFC Securities Limited, SEBI Reg. No.: NSE, BSE, MSEI, MCX: INZ000186937; AMFI Reg. No. ARN: 13549; PFRDA Reg. No. POP: 11092018; IRDA Corporate Agent License No.: CA0062; SEBI Research Analyst Reg. No.: INH000002475; SEBI Investment Adviser Reg. No.: INA000011538; CIN - U67120MH2000PLC152193

Investment in securities market are subject to market risks. Read all the related documents carefully before investing.

Mutual Funds Investments are subject to market risk. Please read the offer and scheme related documents carefully before investing.

Registration granted by SEBI, membership of BASL (in case of IAs) and certification from NISM in no way guarantee performance of the intermediary or provide any assurance of returns to investors.